

FYI



Chariho Regional School District

Office of the Superintendent

455A Switch Road
Wood River Junction, Rhode Island 02894



SYLVIA K. STANLEY
School Committee Chairperson

BARRY J. RICCI
Superintendent of Schools

JANE L. DALY
Assistant Superintendent of Schools

All Kids. All of the Time.

February 12, 2018

Ken Wagner, Commissioner
Rhode Island Department of Education
255 Westminster St.
Providence, RI 02903

Dear Ken,

In your February 6, 2018 email to RISSA Executive Director Tom DiPaola and ten others in which you accuse me of self-serving bias, you make a number of claims which are deserving of a response. It is my hope that you were simply uninformed or provided with inaccurate information as opposed to purposely twisting the facts and providing only partial information to suit your own purposes.

Each of your comments is listed below, followed by the accurate information.

* Told the CTE Board subgroup at a public meeting that his superintendent colleagues were the biggest barrier to his success. *You are correct about this, but did not provide context. Since you were present, you also know that this comment was made in a joking manner. In fact, when I returned to my place in the audience, my South County colleagues remarked that my presentation to the subgroup made plenty of sense.*

* Has sued the state to secure perpetual and exclusive rights to all CTE programming in that region of the state, to the detriment of his colleagues and the communities they represent. *You are correct about this, but failed to provide full information. When the Chariho Area Career and Technical Center was transferred to Chariho, an Agreement was signed which included a non-compete clause. Since I negotiated the Agreement, I am very familiar with the reasoning behind the clause. If Chariho were to assume responsibility for a building that RIDE failed to maintain for years, some future protection would be needed as Chariho would need to invest funds in the Center. As I've relayed to you publicly and privately, when someone doesn't like an agreement, they should request to re-negotiate it. They shouldn't say, as you have, "I have no intention of honoring that Agreement."*

* Rejected a previous version of the CTE funding solution because he would stand to lose more money, primarily because his costs have consistently exceeded statistical norms based on the available data. *The tuition that Chariho charges to sending districts is based upon the RIDE formula. It was developed by Ms. Dias and while not required, has been used by Chariho since the formula was distributed, along with a promise that RIDE would defend districts using the formula in a tuition dispute. Regarding a previous version of the CTE funding solution, I have no authority to reject. I expressed concern about the lack of funding allowance for students with disabilities as 21% of the students Chariho accepts from sending districts have IEPs (as compared to Chariho's district rate of 12%). Further, I did raise a number of issues that are better resolved before the dissemination of a new formula, not after. As is usual, I received no specific response from RIDE.*

* Refuses to make payments to his colleagues and their communities, despite repeated due process proceedings that have upheld the obligations. *You are correct that I refuse to make payments, but it is because your interpretation of the*

The Chariho Regional School District does not discriminate on the basis of age, gender, marital status, race, religion, national origin, color, creed, political affiliation, sexual orientation, or handicap in accordance with applicable law.

Telephone: (401) 364-7575. Fax: (401) 415-6076 Voice/TDD: (401) 364-1171

regulations is contrary to state law and your own guidance, which by the way was removed from the RIDE website during the only Chariho case that has been heard at RIDE. That case involved a Chariho student attending Narragansett High School so that she could attend school where her dad is a teacher and away from the 'votech' students at Chariho. That case has been appealed to Superior Court. A second case involving a student attending North Kingstown High School, recruited to play volleyball, was appealed by Chariho in August after you stated that you would withhold state aid without the required due process hearing. Chariho is still waiting for its appeal to be heard, seven months later. (Actually, a member of your staff has indicated what the decision will be, in writing, even though the appeal has never been heard.) There are three other students for which payments have not been made, none of which have transferred because of the quality of CTE programs or because a particular CTE program was not offered at Chariho. (One alleges that I'm a racist, one likes the band at North Kingstown High School, and the last is a friend of the student cited above. All five will cost Chariho taxpayers huge sums of money for reasons unrelated to CTE.) Interestingly, you have interrupted the local due process procedures in each of these cases, contrary to your own regulations.

* Continues to mislead families in his community about their rights under current rules and regulations, despite repeated clarifications and direction. *I do not mislead families. I provide them with the law, the RIDE guidance, and an orientation to our programs. It is your interpretation of the regulations that is contrary to the law. You might want to review the following: § 16-64-1. Residency of children for school purposes. "Except as provided by law or by agreement, a child shall be enrolled in the school system of the city or town where he or she resides. A child shall be deemed to be a resident of the city or town where his or her parents reside..." None of the cases heard at RIDE have considered the residency statute, and you refuse to provide Chariho with due process in the North Kingstown case, where the residency statute would be considered. Further, you might also refer to §16-45, which governs regional career and technical centers. Finally, I have to wonder why you have targeted Chariho, which has been so transparent about this, with your rants and not other districts which instruct their staff in more subtle ways to discourage enrollment in the regional centers.*

I respect, but don't agree with your focus on school choice as a remedy to fix what ails public education. Since you were unsuccessful in promoting further school choice in the legislature, it seems that you are using the CTE regulations to accomplish what you were unable to accomplish legislatively. Further, RIDE's approval of low-quality CTE programs in some compressive high schools and lack of rigor in the pathway development process will be hurtful to all students and will accelerate a 'race to the bottom.'

As I indicated in my response to your unprofessional, ill-informed and incomplete email to Executive Director DiPaola and others, I remain willing to discuss these and other issues with you, with or without counsel. Remember, though, neither you nor I are above the law.

Sincerely,



Barry J. Ricci
Superintendent of Schools

C: Deputy Snider, Director Blanchette, Director Osborn, Chief Counsel Roche, President Stringfellow, C. Dias, P. Cummings, T. Ryan, T. DiPaola, K. Crowley, K. Gallagher, Chariho School Committee, file

P.S. I have made close to a half dozen requests for agendas and minutes, and the location of same, of the CTE Board, Trustees, and Subcommittees, only to have been provided some of what was requested (after multiple requests with no response). I consider this to be a willful violation of the Open Meetings Act on the part of your staff and the Department. I hope that you will take immediate steps to follow this law.

2018-02-16

Requested by Georgia Ure

1. Budgeted in FY19 Development Officer \$45,000

2. Advertisement for Career and Technical Center:

Providence Journal

- 1 day in paper
- 100,000 web impressions – viewed by 2/15 to targeted demographics
- \$2,000

Westerly Sun

- Education Insert
- Includes cover, article, and advertisement
- \$1,200

Both were funded with Perkins dollars. Advertising for all CTC centers is an allowable expense for Perkins funds

CHARIHO tech
SOUTH COUNTY'S CAREER & TECHNICAL CENTER
Your Path to College and Career Success
Programs Start in Grade 9

Advertising Design & Digital Printing
Agricultural Sciences – Plant
Agricultural Sciences – Animal
Automotive Technology
Finance and Accounting
Marketing
Computer Technology
Construction Technology
Cosmetology
Criminal Justice
Culinary Arts
Early Childhood/Elementary Education
Electrical & Renewable Energy Sources
Engineering, Drafting & Design
Health Careers
Hospitality & Event Planning
Heating, Ventilation, Air-Conditioning & Refrigeration (HVAC-R)
Marine Technology
Welding & Shipfitting

401.364.6869
chariho.k12.ri.us/ctc

To Apply, Visit www.chariho.k12.ri.us/ctc-application

Applications from students who are residents of Block Island, Charlestown, Easton, Hopkinton, Jamestown, Narragansett, North Kingstown, Richmond, South Kingstown, Westerly and West Greenwich will receive priority for early acceptance over those received from other districts in Rhode Island. The district of residence listed above will provide transportation.

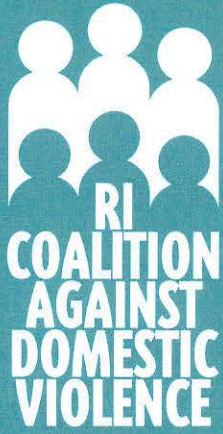
Applications Due February 15, 2018

CHARIHO REGIONAL SCHOOL DISTRICT

Profit & Loss Statement

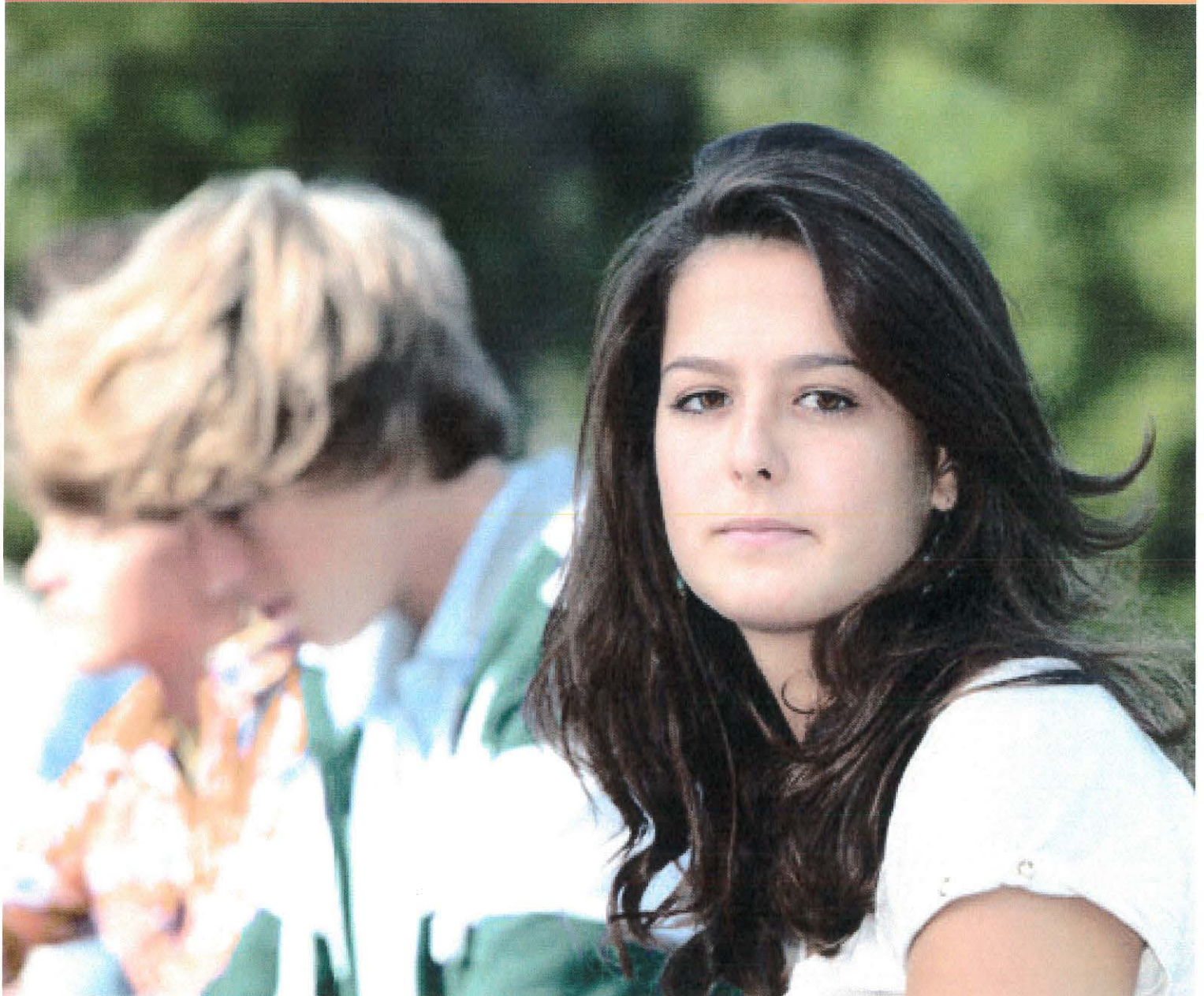
Feb-18

INCOME	Feb-18	Feb-17	YTD 17-18	YTD 16-17
Days	16	15	112	113
Meals	25,137	24,320	168,719	180,329
Cash Receipts	\$ 45,404.31	\$ 41,259.36	\$ 310,860.95	\$ 304,967.63
Anticipated Reimbursements	30,346.11	29,464.71	200,431.84	\$ 221,511.34
TOTAL INCOME	\$ 75,750.42	\$ 70,724.07	\$ 511,292.79	\$ 526,478.97
EXPENSES				
Cost of Food Used	\$ 30,377.33	\$ 32,235.02	\$ 197,153.92	\$ 207,196.03
National Discounts & Allocations	\$ 3,977.16	\$ 4,617.93	\$ 31,265.04	\$ 28,327.78
Net Food Cost **	\$ 26,400.17	\$ 27,617.09	\$ 165,888.88	\$ 178,868.25
Food Cost % of Sales	34.85%	39.05%	32.44%	33.97%
Payroll \$	\$ 40,167.02	\$ 36,795.00	\$ 277,065.21	\$ 273,500.68
Payroll Cost % of Sales	53.03%	52.03%	54.19%	51.95%
Direct Expenses \$	\$ 8,401.67	\$ 8,695.18	\$ 55,677.63	\$ 56,086.98
Direct Expense Cost % of Sales	11.09%	12.29%	10.89%	10.65%
Management Fees \$	\$ 1,138.24	\$ 1,069.99	\$ 7,581.70	\$ 7,914.78
Fee % of Sales	1.50%	1.51%	1.48%	1.50%
Client Return/(Subsidy)	\$ (356.68)	\$ (3,453.19)	\$ 5,079.37	\$ 10,108.28
	-0.47%	-4.9%	0	1.9%



Rhode Island's Comprehensive Teen Dating Violence Education Law

A Policy Implementation Evaluation Report



Authors

Cynthia Roberts, PhD, Empowerment Evaluator, Rhode Island Coalition Against Domestic Violence

Lucy Rios, Director of Prevention and Communications, Rhode Island Coalition Against Domestic Violence

Acknowledgments

We wish to acknowledge the commitment of the Rhode Island DELTA FOCUS State Leadership Team members, who played an integral role in helping to conceive of this report, informing its contents, participating in key informant interviews as both participants and interviewers, and providing invaluable feedback at various stages of the report. We gratefully acknowledge the contributions of Tara Martino and Julie Rousseau, interns who assisted with conducting and coding key informant interviews and reviewing existing teen dating violence school policy literature. We would like to thank Krista D'Amico for editing and designing this report, and Rebecca Burns for providing graphic design support.

Past and Present Members of the Rhode Island DELTA FOCUS State Leadership Team

Christina Batastini, EdM	Rhode Island Department of Health, Adolescent and School Health Program
Ann Burke, MEd	Lindsay Ann Burke Memorial Fund
Deborah DeBare, MMHS	Rhode Island Coalition Against Domestic Violence
Sarah DeCosta	Elizabeth Buffum Chace Center
Deborah Ferrante, MA	Elizabeth Buffum Chace Center
Elizabeth Fuerte	Women's Resource Center
Zulma Garcia	Formerly, Rhode Island Coalition Against Domestic Violence
Jolayemi Ilori, MPH	Rhode Island Department of Health, Violence and Injury Prevention Program
Sandra Malone	Day One
Helen McDonald	Formerly, Sojourner House
Rachel Orsinger, JD	Formerly, Rhode Island Coalition Against Domestic Violence
Deborah N. Pearlman, PhD	Brown University and Rhode Island Department of Health
Beatriz Perez	Formerly, Rhode Island Department of Health, Violence and Injury Prevention Program
Kate Porter	Rhode Island Coalition Against Domestic Violence
Patricia Raymond, RN, MPH	Rhode Island Department of Health, Center for Preventive Services
Rosemary Reilly-Chammat, EdD	Rhode Island Department of Education, Office of Student, Community, and Academic Supports
Claire Spaulding-McVicker	Katie Brown Educational Program
Jasmine Torres	Formerly, Crossroads Rhode Island
Jessica Walsh	Women's Resource Center
John Wesley, JD	Rhode Island Coalition Against Domestic Violence
Cristina E. Williams	Formerly, Rhode Island Coalition Against Domestic Violence

© RICADV 2017

Chariho High School: A Case Example

Stakeholders told us that they would like to see a case example of a Rhode Island school that is doing an exemplary job of implementing the Lindsay Ann Burke Act.

We identified Chariho High School, in the Chariho Regional School District, as such a site because of its multifaceted approach to preventing and addressing teen dating violence.

The following examples are facets of a comprehensive approach to addressing teen dating violence.

- ▶ **Using Data.** Chariho High School administrators and staff use available district-level data on teen dating violence and on risk and protective factors to guide their policies and practices.
- ▶ **Training All School Adults for a Whole-School Protocol.** All teachers and staff are trained in their district's protocol on how to respond to incidents of teen dating violence.
- ▶ **Implementing Curriculum.** Chariho High School's curriculum has a clear scope and sequence, teaching about teen dating violence in a developmentally appropriate way across every grade level.
- ▶ **Fostering a School Culture of Teen Dating Violence Prevention Outside of the Classroom.** The Chariho Theater Group was a 2012 recipient of the Champions for Change Award during Teen Dating Violence Awareness and Prevention Month. The group received the award for its work to engage and educate students at Chariho High School in challenging norms that support violence in dating relationships, through the annual production of a play. The district also regularly participates in the Lindsay Ann Burke Memorial Fund's annual poster contest, which engages youth in raising awareness about the issue of teen dating violence and makes the issue more visible in the community.

