



# Curriculum Town Hall Chariho Regional School District

October 6, 2022

5:00- 5:45 PM

Chariho Middle School Auditorium



# Panel Members



**Gina Picard**  
Superintendent



**Michael Comella**  
Assistant Superintendent



**Jennifer Durkin**  
Director of Special Education



**Mary Beth Florenz**  
CMS Assistant Principal



**Joe Gencarelli**  
Hope Valley Principal



**Susie Scanapieco**  
Secondary  
STEM Specialist



**Dana Hall**  
Secondary  
Humanities Specialist



**Kerry Pastore**  
Reading Specialist &  
Academic Fellow



**Kristina Sparfven**  
Math Specialist



**Eric Mulvey**  
Math Specialist

# Chariho Curriculum

- Posted on district website
- Updated regularly to reflect approval to revisions

Curriculum is defined as a standards-based sequence of planned experiences where students practice and achieve proficiency in content and applied learning skills.

## CURRICULUM

Curriculum Improvement Process

Five-Year Cycle for Curriculum Revision

### CHARIHO CURRICULA

- Business/Technology Curriculum Grades 9-12
- Comprehensive School Counseling Program K-12
- English/Language Arts
- Health Curriculum Grades K - 12
- Information Literacy: Library Media Curriculum Grades K-12
- Math
- Music Grades K-12
- Physical Education Grades K-12
- Science Curriculum Grades K - 12
- Social Studies Curriculum Grades K-12
- STEM Curriculum Grades 6-8
- Technology Education Grades K-8
- Visual Arts Grades K-12
- World Language Curriculum Grade K-12

*Chariho Guidelines for Elementary Literacy Instruction*

*Chariho Guidelines for K-12 Writing Instruction*

# Purpose of Curriculum Process

- To assure the incorporation of current, research and evidence-based instruction in all content areas.
- To assure curriculum meets high standards set by RIDE and other national professional organizations.

# 5-Year Curriculum Revision Cycle

- Established and annually updated by the District Curriculum Planning Council (DCPC)
- Provides for ongoing revision of curriculum based upon an evaluation of the current program
- Informs the necessity to purchase improved instructional material and providing professional development to implement new curriculum


# 5-Year Curriculum Revision Cycle

<i>Subject</i>	<i>Last Revision Date</i>	<i>2020-2021</i>	<i>2021-2022</i>	<i>2022-2023</i>	<i>2023-2024</i>	<i>2024-2025</i>
Art	2019-2020	Pilot	Implement			Study/Produce
Business Technology	2017-2018			Study/Produce	Pilot	Implement
ELA	2017-2018	Vetting of High Quality Curriculum Materials	Study/Produce	Implement		
Comprehensive Counseling	2019-2020	Pilot	Implement			Study/Produce
Health	2018-2019	Implement			Study/Produce	Pilot
Library/Media	2021-2022		Study/Produce	Pilot	Implement	
K-8 Math	2021-2022	Vetting of High Quality Curriculum Material	Study/Produce	Pilot	Implement	
9- 12 Math	2022-2023		Study/Produce	Pilot	Implement	
Music	2019-2020	Pilot	Implement			Study/Produce
Physical Education	2020-2021	Study/Produce	Pilot	Implement		
Science	2020-2021	Study/Produce	Pilot	Vetting of High Quality Curriculum Materials		
Social Studies	2015-2016			Study/Produce	Pilot	Implement
STEM 6-8	2018-2019	Implement			Study/Produce	Pilot
Technology Education K-8	2021-2022		Study/Produce	Pilot	Implement	
World Language K-12	2019-2020	Pilot	Implement			Study/Produce

# Committees Members / Representatives

<b>Content</b>	<b>Subject Area Task Force</b> <ul style="list-style-type: none"><li>- 1 teacher from each grade level</li><li>- 1 content specialist as needed</li></ul>
<b>Building</b>	<b>School Improvement Team (SIT)</b> <ul style="list-style-type: none"><li>- Administrator(s), Teachers, Parents / Community Members, Students</li></ul>
<b>District</b>	<b>District Curriculum Planning Council (DCPC)</b> <ul style="list-style-type: none"><li>- Administrator(s), Teachers, Parents / Community Members, Students</li></ul>

# Curriculum Process Committees



**Subject Area Task Force** - Develops or adopts standards-based curriculum in each subject area taught in Chariho.

**School Improvement Team (SIT)** - Provides building-level consultation and recommendations to DCPC.

**District Curriculum Planning Council (DCPC)** - Reviews and approves each subject area curriculum and make recommendations to the Superintendent.

**Superintendent** - Assures that the curriculum conforms with both the Chariho Strategic Plan and federal mandates, and makes recommendation for approval to School Committee.

**School Committee** - Approves the adoption of curriculum and authorizes the Superintendent or designee to implement the curriculum improvement process.



# General Responsibilities of Committees

- Monitor the results of local and state assessments and make recommendations to school and district leaders
- Evaluate subject area programs and recommend to the appropriate (Subject Area) Task Force whether or not curriculum revision is necessary
- Monitor the curriculum improvement process and approve deviations from the revision schedule
- Make curricula recommendations to the Superintendent

# Role of Subject Area Task Force

- Revises and develops curriculum following curriculum cycle and according to pre-established format
- Monitors implementation of curriculum
- Selects new curriculum materials that reflect curriculum content
- Designs a comprehensive district-wide professional development plan for the respective curriculum area

# Information for Parents

Visit the  
Chariho Regional School District  
Curriculum Webpage



# SCIENCE OF READING

## The Definition

The **science of reading** is a vast, interdisciplinary body of *scientifically-based*\* research about reading and issues related to reading and writing.

This research has been conducted over the last five decades across the world, and it is derived from thousands of studies conducted in multiple languages. The science of reading has culminated in a preponderance of evidence to inform how proficient reading and writing develop; why some have difficulty; and how we can most effectively assess and teach and, therefore, improve student outcomes through prevention of and intervention for reading difficulties.

\* See the chart on page 11 for a better understanding of what is meant by scientifically-based research

Science of Reading: Defining Guide

We cannot understand by reading  
what we cannot understand through listening.



## What the Science of Reading is **NOT**

- ❌ an ideology or philosophy
- ❌ a fad, trend, new idea, or pendulum swing
- ❌ a political agenda
- ❌ a one-size-fits-all approach
- ❌ a program of instruction
- ❌ a single, specific component of instruction, such as phonics

# How our **Teachers** are gaining proficiency in the knowledge and practices of the **Science of Reading and Structured Literacy**



**AIM Pathways** is the “Proficiency Level” Science of Reading training program teachers are participating in over the next 2 years.

**BRIDGE-RI** is the “Awareness Level” Science of Reading training program teachers are participating in.

THE HOME OF MTSS RHODE ISLAND  
**BRIDGE-RI**

*Bridging Research, Implementation, & Data to Guide Educators in Rhode Island*

# Putting the Science of Reading Into Practice With **High Quality Curriculum Materials**



# Chariho Uses i-Ready Grades k-8

## How Does *i-Ready Classroom Mathematics* Prepare My Student for Future Success?

To prepare students for college and career success, math instruction has shifted from primarily memorizing steps for getting answers to developing **deep, conceptual understanding of how the math works**. But success in the 21st century involves more than just academic achievement. It also requires essential skills that extend beyond math. That's why *i-Ready Classroom Mathematics* incorporates 21st-century skills into your student's daily math instruction.



# What math class looks like with i-Ready Mathematics

## Discourse Based



Students learn by solving and talking to each other.



Explaining your thinking is central to class.



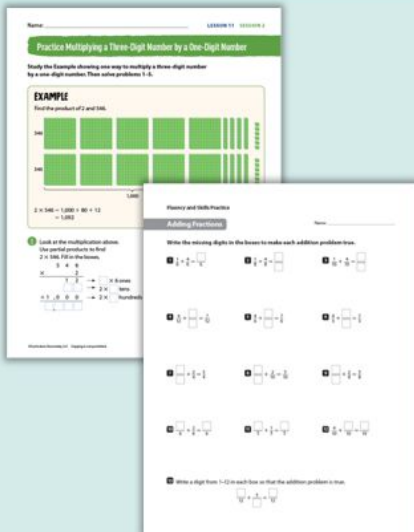
Knowing *why* something works is as important as knowing how to do it.



# What practice looks like with i-Ready Mathematics

## In Class

- Practice problems on green pages
- Fluency and Skills practice worksheets may also be assigned (in a separate booklet).
- Refine session is in-class time for practice/building to mastery.
- Lesson level, unit level, cumulative practice (ongoing)



## Online

- Personalized Instruction\*
- Interactive Practice
- Learning Games



Plus, additional materials  
at teacher discretion.

# The Diagnostic

## What It Does

- ✓ Assesses students' learning needs
- ✓ Results create reports teachers use to meet those needs
- ✓ Automatically assigns Personalized Learning lessons\*
- ✓ Provides a starting point to show how much students learn and grow this year (so we can celebrate later!)

## What It Doesn't Do

- ✗ Give students grades
- ✗ Replace the teacher's understanding of students (I'm still going to grade and look at students' work)
- ✗ Place students in their class levels

DIAGNOSTIC

WORKTEXT

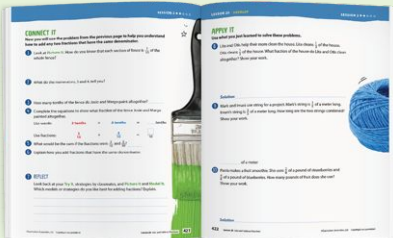
DIGITAL EXPERIENCE

# The Student Worktexts

## In-Class Instruction Materials

Reference problems worked on in class

 On Blue Pages



## Practice Problems

More opportunities to practice the math learned in class

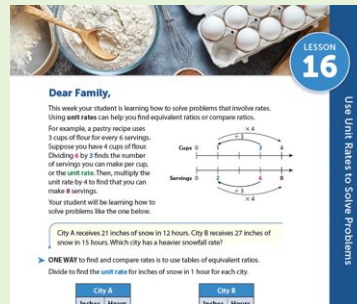
 On Green Pages



## Family Letters

Summarize math concepts learned in class

 Found at the Beginning of Each Lesson

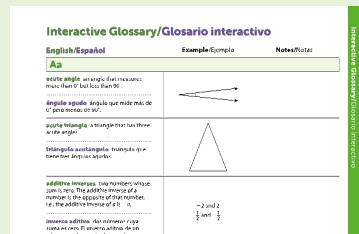


## Math Glossary

A glossary of math terms in English and Spanish with examples

Look up key math terms

 End of the Worktext



DIAGNOSTIC

WORKTEXT

DIGITAL EXPERIENCE

# The Student Digital Experience

## Student Dashboard

Access activities your teachers have assigned (blue buttons) and the Diagnostic or My Path (green buttons)



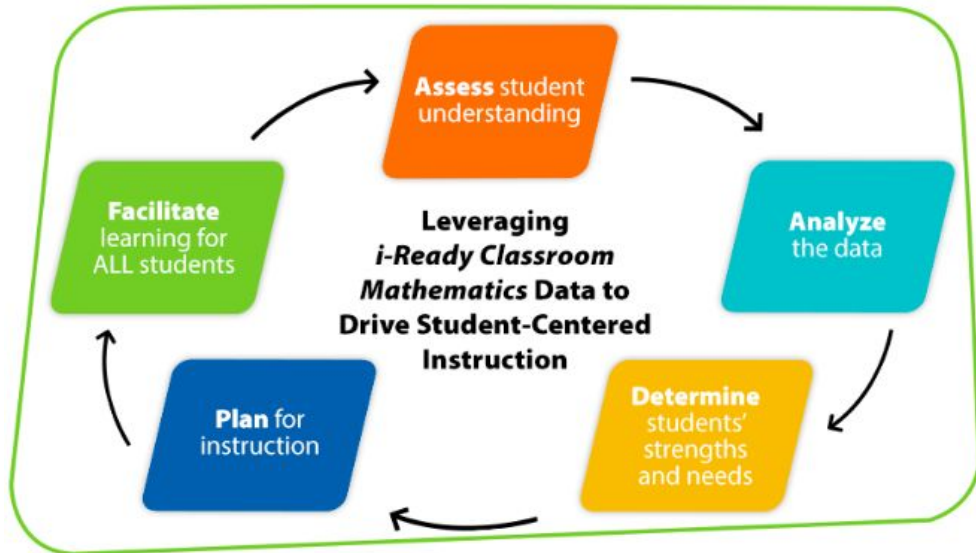
# How our **TEACHERS** are learning to implement our **CURRICULUM**

Support from RIDE provided our teachers with learning around curriculum implementation during the 2021-22 school year.

In 2022-23 we are continuing to improve our learning around data to better personalize instruction.

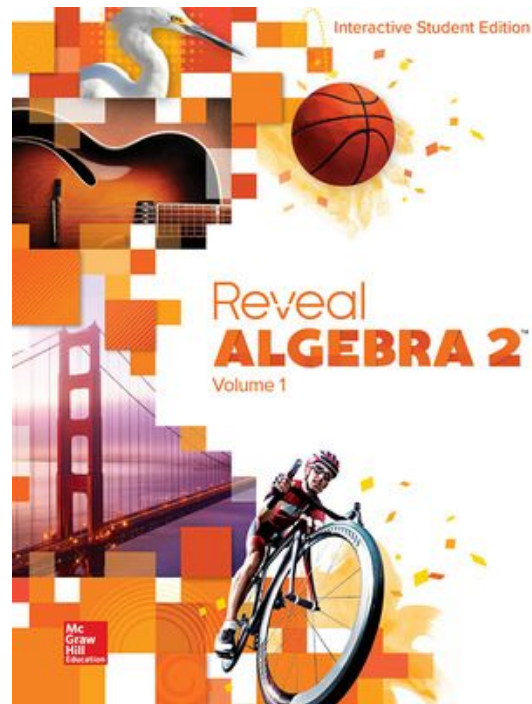
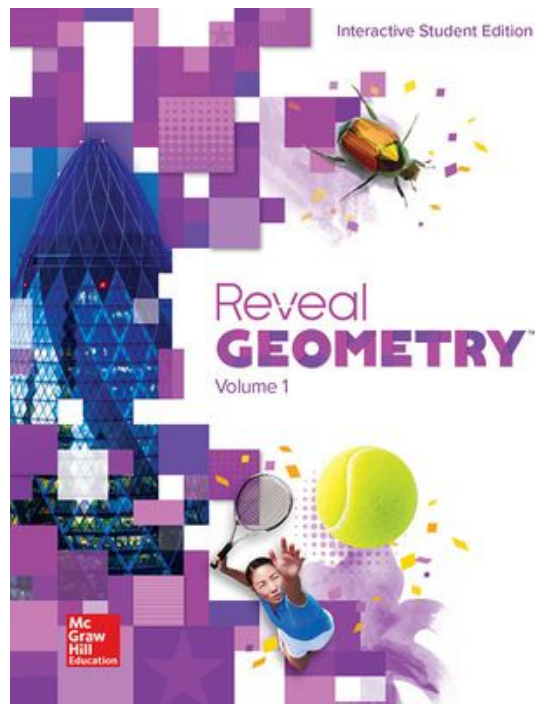
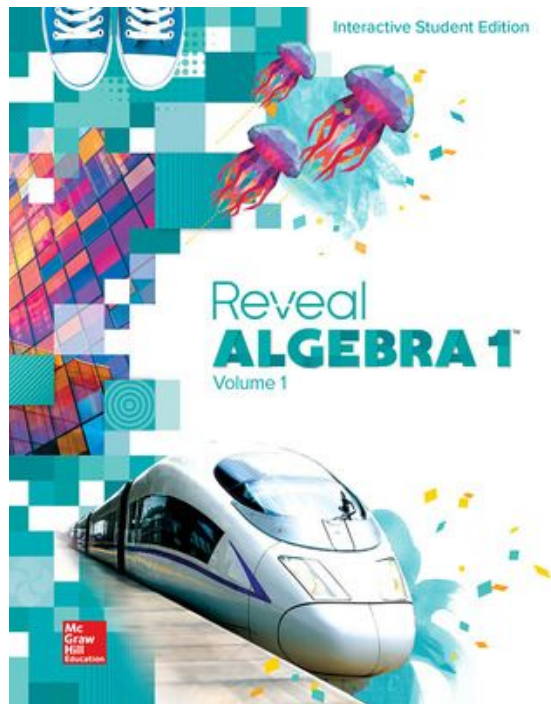


*i-Ready Classroom Mathematics* is a program that uses the Try–Discuss–Connect routine to spark meaningful partner and whole class discussions. This strengthens students' understanding and helps them become independent learners.





# What math class looks like with REVEAL at the High School:



# What math class looks like with REVEAL at the High School:

## Many methods of showing learning:

- Paper/Pencil
  - Every student has a workbook
- Online practice
  - Multiple attempts & immediate feedback
- Assessments
  - Quizzes & Unit Tests

### Practice

 Go Online

You can complete your homework online.

### Example 1

Write a numerical expression for each verbal expression.

1.

 Instructions

two plus twelve divided by four



Math History Minute  
Hungarian

**mathematician George Polya (1887–1982)** is known as the father of mathematical problem solving. One of his books, *How to Solve It*, was a bestseller that was translated into 17 languages. In it, Polya describes a four-step plan for problem solving.

### Example 6 Write and Evaluate Expressions

**MONEY** Thursdays are Student Days at LSC Theaters. Student tickets are \$5 and popcorn refills are free. You will buy a ticket and a 20-ounce bottle of water, and you will split the cost of a large tub of popcorn and large candy with a friend. How much money should you bring?

	Popcorn	Drinks	Snacks
Mini Tub	\$3.00	20 oz. _____	Fruit Snacks _____ \$3.00
Medium Tub	\$5.00	32 oz. _____	Fruit Drink _____ \$5.00
Large Tub	\$7.50	44 oz. _____	Candy _____ \$3.50

**Understand** We are given what you will buy, the cost of each item, and the cost of the popcorn and candy that will be split with a friend. We are asked to find the \_\_\_\_\_.

**Plan**

**Step 1** Write an expression to represent the \_\_\_\_\_ of the ticket, drink, and food.

**Step 2** \_\_\_\_\_ the expression to find the cost.

**Solve**

**Step 1** Write the expression for the total cost in dollars.

ticket + drink + popcorn + candy

$5 + 5 + \frac{1}{2} \cdot 7.50 + \frac{1}{2} \cdot 3.50$  Original expression

**Step 2** Use the order of operations to evaluate the expression.

$5 + 5 + \frac{1}{2} \cdot 7.50 + \frac{1}{2} \cdot 3.50$

**Check** The cost of the ticket and water is \$ \_\_\_\_\_. The total cost of the popcorn and candy is \$ \_\_\_\_\_. So half of that cost is \$ \_\_\_\_\_. The total is \$10 + \$5.50 or \$ \_\_\_\_\_.

**Check**

**PETS** While she was on a 7-day vacation, Ms. Hernandez boarded her dog at a kennel. If her boarding budget is \$200, can Ms. Hernandez afford a daily extra walk and one wash and nail trimming? Explain.

Service	Cost
Board	\$24 per day
Wash	\$4.50
Extra walk	\$4 per day
Nail trimming	\$2.25
Vitamins	\$1 per day

 Go Online You can complete an Extra Example online.

Name \_\_\_\_\_ Period \_\_\_\_\_ Date \_\_\_\_\_  
 Go Online You can complete your homework online.

### Practice

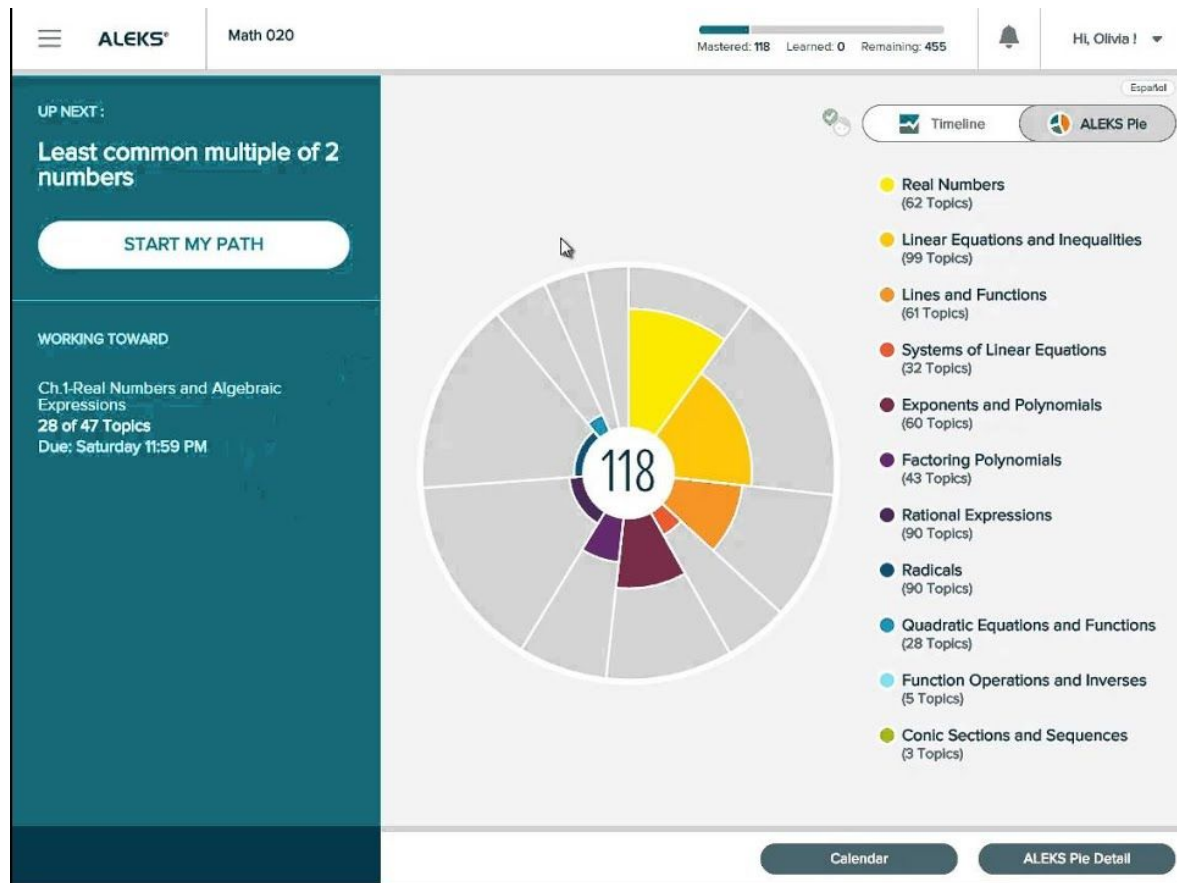
**Example 1** Write a numerical expression for each verbal expression.

1. two plus twelve divided by four
2. eighteen more than five
3. seven more than three times eleven
4. twenty-five less than one hundred
5. six minus three minus one
6. fourteen decreased by three times four
7. twenty-four divided by six plus seven
8. eight times six divided by two minus nine
9. one hundred sixteen divided by four plus twenty-eight minus thirty-three
10. two hundred fifty-nine minus eighty-five plus sixty-two divided by two

**Example 2** Write a numerical expression for each verbal expression.

11. the sum of three and seven divided by two
12. the difference of six and two divided by four
13. the sum of four and nine times three
14. eighteen divided by the sum of two and seven
15. ten divided by the product of four and five
16. the difference of eleven and four times five
17. the sum of one and two divided by twenty
18. the sum of two and four and six times eight
19. the sum of twelve and sixteen divided by the sum of three and four
20. the difference of twenty-two and six divided by the sum of five and three
21. the sum of thirty-six and fourteen divided by the product of two and five
22. the quotient of thirty-two and four divided by the sum of one and three
23. the sum of six and fifteen divided by the difference of thirteen and nine
24. the difference of thirty-one and seventeen divided by the product of ten and four

**ALEKS:**  
**Students in**  
**Algebra I,**  
**Geometry and**  
**Algebra II will**  
**be on a**  
**personal**  
**learning plan**  
**for additional**  
**growth.**





# **Special Education Advisory Council**

The Special Education Advisory Committee (SEAC) is a group of individuals charged with improving the education and welfare of children with disabilities here in our District. The SEAC addresses a variety of topics related to Special Education, performs outreach and organizes education events during each school year.

## **2022-2023 SEAC Meeting Schedule**

**All meetings begin at 4 PM**

**September 15, 2022**

**November 10, 2022**

**February 16, 2023**

**May 11, 2023**

**Meetings are held in the Barry J Ricci Library at Chariho High School**

# **Opportunities to Get Involved**

**School Improvement Teams**

**Parent Teacher Organizations**

**Chill Chariho Mentoring Program**

**Chariho Boosters**

**Special Education Advisory Council**

**Surveyworks**

**Volunteering**